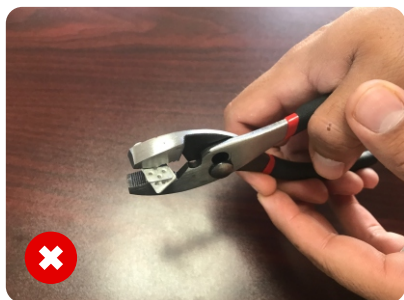


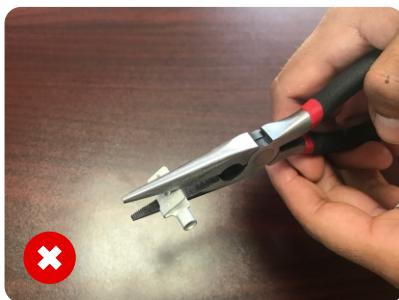


A Smarter Way To Heat Your Home

- ⚠ No more than 4 Heater Strips per Transformer.
- ⚠ Do not install product where you expect standing water.
- ⚠ Do not directly connect into 120 VAC.
- ⚠ Do not penetrate or puncture material with metal objects.
- ⚠ Do not exceed minimum (3 Ft) and maximum (6 - 7.1 Ft) material lengths.
- ⚠ Do not exceed 30ft-wiring limitation on Secondary Circuit.
- ⚠ Do not place transformer within 4 inches of combustible materials.
- ⚠ Always use 10 AWG between Transformer and Heater Strip.



Do not use Linesman, needlenose or any other type of pliers to secure Splice Connector onto material!



For proper crimping please use a flat nose-crimping tool.



WARNING